

Timberline Table Lamp

Designed by Mads Caprani - 1970's



ITEM NUMBER

Timberline Table Lamp, EU - Oak/Birch, White Canvas	10137217
Timberline Table Lamp, US - Oak/Birch, White Canvas	10137387
Timberline Table Lamp, UK - Oak/Birch, White Canvas	10137388
Timberline Table Lamp, AU - Oak/Birch, White Canvas	10137389
Timberline Table Lamp, CN - Oak/Birch, White Canvas	10137390
Timberline Table Lamp, KR - Oak/Birch, White Canvas	10137391

DESCRIPTION

The Timberline Table Lamp offers design lovers a desktop edition of Mads Caprani's much-loved floor lamp. Faithful to Caprani's original question-mark-inspired design, this scaled-down format retains the signature swan-necked shape and playful 1970s Scandinavian aesthetic, with subtle adjustments to optimize stability and functionality. Crafted with precision, the lamp features a bent-wood spine made from nine layers of oak and birch, an adjustable shade allowing users to control the light direction, and a solid cast-iron crescent base for stability. The lamp is easy to move around the home, casting a localized light and creating a warm and intimate ambience wherever it is placed. Delivered flatpack for easy assembly, the replaceable components ensure longevity and ease of maintenance.

Materials & Finishes

STEM FINISH

Oak/Birch



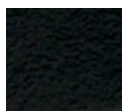
SHADE FINISH

White Canvas



BASE FINISH

Cast Iron



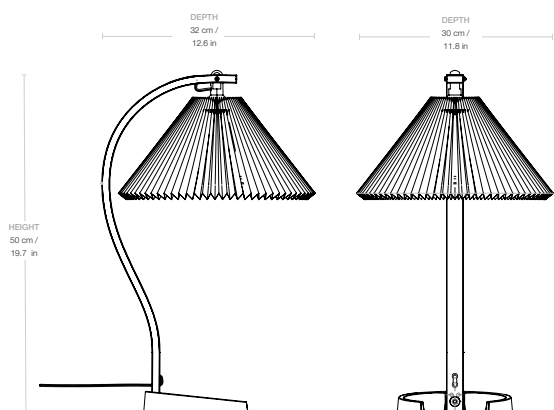
CORD SHAPE

Flat

CORD COLOR

Black

Dimensions



LAMP WIDTH

30 cm / 11.8 in

LAMP DEPTH

32 cm / 12.6 in

LAMP HEIGHT

50 cm / 19.7 in

SHADE WIDTH

30 cm / 11.8 in

SHADE DEPTH

30 cm / 11.8 in

SHADE HEIGHT

16 cm / 6.3 in

BASE WIDTH

17 cm / 9.7 in

BASE DEPTH

15,5 cm / 6.1 in

BASE HEIGHT

3 cm / 1.2 in

CORD LENGTH

200 cm / 78.7 in

DISTANCE TO SWITCH

30 cm / 11.8 in

Weight

TOTAL WEIGHT	1,5 kg / 3.3 lbs
SHADE WEIGHT	0,3 kg / 0.6 lbs
BASE WEIGHT	1 kg / 2.2 lbs

Number of parcels 1

PACKAGING LENGTH	55 cm / 59.8 in
PACKAGING WIDTH	25 cm / 22 in
PACKAGING HEIGHT	13 cm / 6.7 in
PACKAGING WEIGHT	0,75 kg / 1.6 lbs
GROSS WEIGHT	2,25 kg / 5 lbs

Electrical Specifications

BULB SOCKET	E14/E12
RECOMMENDED BULB	4-6W LED
DIMMER	No
SWITCH	On Cord
VOLTAGE	240V/120V
BULB INCLUDED	No
PLUG TYPE	EU - Type C, 2pin, US - Type A, 2pin, AU - Type I, 3 pin,

Test & Certifications

CERTIFICATION	   
ISOLATION CLASS	II
IP CLASSIFICATION	IP20

Timberline Floor Lamp

Designed by Mads Caprani - 1970's



ITEM NUMBER	Timberline Floor Lamp - Oak/Birch, White Canvas	10108292
DESCRIPTION	With its playful expression, sinuous organic form, and juxtaposition of natural materials, the Timberline Floor Lamp makes a head-turning sculptural feature in any room of the house. Designed in the 1970s by Mads Caprani, it was visually distinct amongst its peers, and swiftly became an international sensation. The carefully considered design, such as the inset cord and adjustable direction shade, show Caprani's attention to quality and detail. The lamps natural materials - oak, birch, canvas, and cast-iron - and neutral color palette make it complimentary to any style of interior.	

Materials & Finishes

STEM FINISH

Oak/Birch



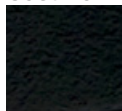
SHADE FINISH

White Canvas



BASE FINISH

Cast Iron



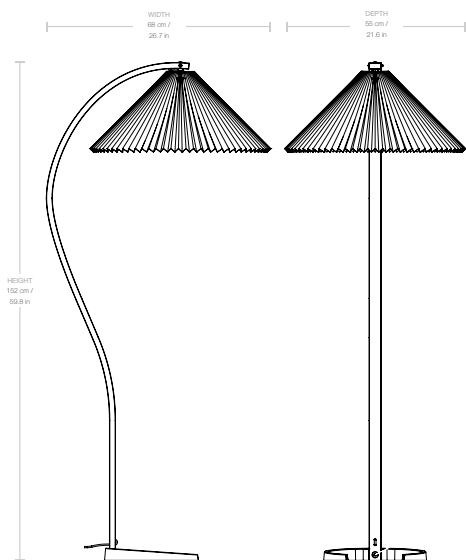
CORD SHAPE

Round

CORD COLOR

Black

Dimensions



LAMP WIDTH	68 cm / 26.7 in
LAMP DEPTH	55 cm / 21.6 in
LAMP HEIGHT	152 cm / 59.8 in
SHADE WIDTH	55 cm / 21.6 in
SHADE DEPTH	55 cm / 21.6 in
SHADE HEIGHT	27 cm / 10.6 in
BASE WIDTH	30,5 cm / 4.7 in
BASE DEPTH	28 cm / 11 in
BASE HEIGHT	4,5 cm / 1.7 in
CORD LENGTH	200 cm / 78.7 in
DISTANCE TO SWITCH	50 cm / 19.7 in

Weight


TOTAL WEIGHT	4,3 kg / 9.5 lbs
SHADE WEIGHT	0,6 kg / 1.3 lbs
BASE WEIGHT	2,6 kg / 5.7 lbs

Number of parcels	1
PACKAGING LENGTH	152 cm / 59.8 in
PACKAGING WIDTH	56 cm / 22 in
PACKAGING HEIGHT	17 cm / 6.7 in
PACKAGING WEIGHT	3,6 kg / 7.9 lbs
GROSS WEIGHT	7,9 kg / 17.4 lbs

Electrical Specifications

BULB SOCKET	E27
RECOMMENDED BULB	6-10W LED
DIMMER	No
SWITCH	On Cord
VOLTAGE	240V
BULB INCLUDED	No
PLUG TYPE	EU - Type C, 2pin

Test & Certifications

CERTIFICATION	
ISOLATION CLASS	II
IP CLASSIFICATION	IP20
