



IN BETWEEN SK7 – SK10

BY **SAMI KALLIO**
2017



IN BETWEEN SK7 – SK10

BY SAMI KALLIO

2017

With Sami Kallio's "Between Gaps" series, the aim was to explore the relationship between positive and negative space, where forms exist in the shapes, as well as the gaps in between. Kallio's In Between bar stool is no exception.

Merging man and machine by combining classic wood craftsmanship with compression moulding, Kallio imbues the In Between Bar Stool with some Nordic soul. Seen in a simple, timeless design that's kissing cousins to his In Between Chair and In Between Table, both made in conjunction with &tradition.

"We love the mix of classic woodworking techniques and modern machinery," notes &tradition Brand Manager Martin Kornbek Hansen. "Intrinsic to our own concept is merging the past with the present. So this design, with its simplicity and beauty, is truly emblematic of our own angle on design."

For Kallio, "The bar stool uses woodturning and special veneer techniques in a way that makes the structure sturdy yet surprisingly light. So it blends into a space without taking up too much space. I wanted the bar stool to fit comfortably into any setting – just like the person sitting in it."



IN BETWEEN SK7 – SK10

BY SAMI KALLIO
2017

Product category Barstool with armrest

Production Process The legs and the armrest are turned from solid oak, the seat and side panels are formpressed from oak veneer.

Environment Indoor

Material SK7 & SK9: Solid wood and formpressed veneer.
SK8 & SK10: Solid wood and formpressed veneer.
CMHR foam and fabric or leather upholstery.

Dimensions (cm/in)

SK7 & SK8: H: 92cm/36.2in.
W: 58cm/22.8in, D: 54cm/21.2in.
Armrest height: 88cm/34.6in.
Seat height: 65cm/26.3in.

SK9 & SK10: H: 102cm/40.2in.
W: 58cm/22.8in, D: 54cm/21.2in.
Armrest height: 98cm/38.6in.
Seat height: 75cm/30.2in.

Weight (kg) SK7 & SK8: 6.5kg
SK9 & SK10: 7kg

Wood finishes White oiled oak, Smoked oiled oak, Black lacquered oak

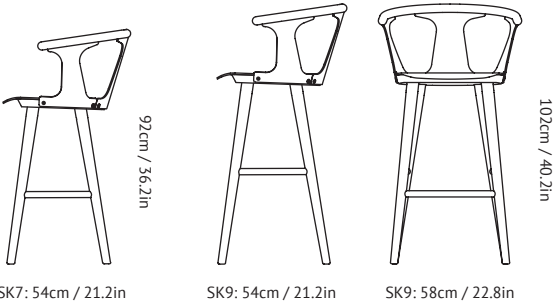
Gliders Felt gliders installed as standard.

COM - Material Consumption SK9 & SK10: Fabric and leather usage; 60x60cm for one seat. COM must be approved by &tradition to ensure suitability for upholstery on the chair.

Strength, Durability and Safety Testing The In Between Barstool is tested for strength, durability and safety according to EN 16139 Level 1 - General contract use.

Cleaning Instructions Please download our Material Cleaning Instructions through www.andtradition.com

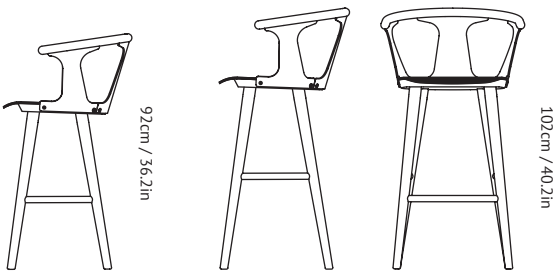
Package Dimensions (cm/in) SK7 & SK8: H: 95cm/37.4in.
W: 57cm/22.5in, D: 54cm/21.3in.
SK9 & SK10: H: 105cm/41.3in.
W: 57cm/22.4in, D: 54cm/21.3in.



SK7: 54cm / 21.2in

SK9: 54cm / 21.2in

SK9: 58cm / 22.8in



SK8: 54cm / 21.2in

SK10: 54cm / 21.2in

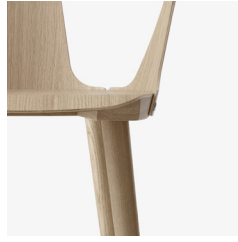
SK10: 58cm / 22.8in

PRODUCT

SK7 & SK9



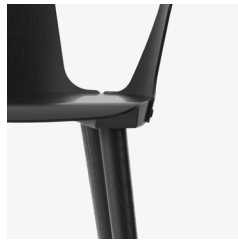
FRAME



White oiled oak



Smoked oiled oak



Black lacquered oak

PRODUCT

SK8 & SK10

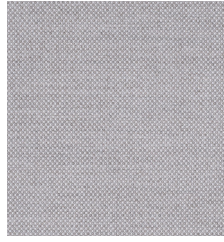


FRAME



White oiled oak

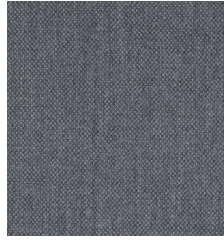
FABRIC



Fiord 251



Smoked oiled oak



Fiord 171



Black lacquered oak



Fiord 191