



## EGG™

---

The Egg™ is one of the triumphs of Arne Jacobsen's total design - a sculptural contrast to the SAS Royal Hotel's almost exclusively vertical and horizontal surfaces. The Egg sprang from a new technique, which Arne Jacobsen was the first to use; a strong foam inner shell underneath the upholstery. Experience originality and design that ages with beauty with the Egg in leather and indulge in its sculptural curves that will last for generations. When Arne Jacobsen in the end of the 1950's designed the SAS Royal Hotel in Copenhagen, he too created the Egg™, the Swan™, the Swan Sofa™, the Series 3300™ and the Drop™. With this furniture Arne Jacobsen wrote history within Danish design worldwide.

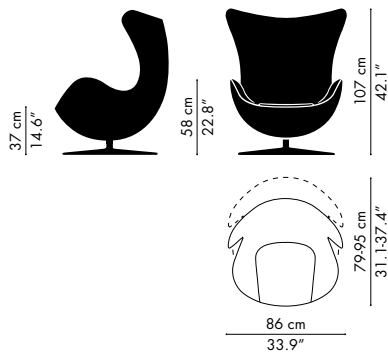


REPUBLIC OF **Fritz Hansen®**

## VARIATIONS & DIMENSIONS

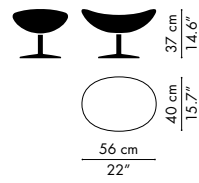
3316

THE MEASUREMENTS CAN VARY +/- 5 %



3127

THE MEASUREMENTS CAN VARY +/- 5 %



## PRODUCT DESCRIPTION

Arne Jacobsen designed the Egg™ for the lobby and reception areas in the SAS Royal Hotel, in Copenhagen. The commission to design every element of the hotel building as well as the furniture was Jacobsen's grand opportunity to put his theories of integrated design and architecture into practice. The Egg is one of the triumphs of Jacobsen's total design - a sculptural contrast to the building's almost exclusively vertical and horizontal surfaces. Like a sculptor, Jacobsen strove to find the shell's perfect shape in clay at home in his own garage. Because of the unique shape, the Egg guarantees a bit of privacy in otherwise public spaces and the Egg - with or without footstool - is ideal for lounge and waiting areas as well as the home.

The shell of the Egg is made of polyurethane foam with glass fibre reinforcement. The foam for the upholstery and the seat cushion is cold cured polyurethane foam. The shell has an adjustable tilt fitting which can be adjusted to the weight of the individual user. The tilt mechanism is made of steel sheet, steel tubing and spring steel. The adjustment handle is of polished drawn stainless steel. The base consists of a satin-polished swivel centre part of welded steel tubing (dia. 38 x 2 mm), a spindle of dia. 28 mm machining steel and a 4-star base in injection moulded aluminium. The leg ferrules are in black-grey synthetic material.

A matching footstool is available for the chair. The shell of the footstool is made of synthetic material, upholstered with cold-cured foam and covered with fabric or leather. The foam for the upholstery and the seat cushion is cold-cured polyurethane foam. The foot stool is without swivel function. The base is a star-shaped base of satin polished aluminium. The ferrules are moulded black polyamide.

## DESIGN

Arne Jacobsen, 1958.



## ARNE JACOBSEN 1902-1971

The collaboration between Arne Jacobsen and Fritz Hansen dates back to 1934. It was not until 1952 however that the team got its breakthrough with the Ant™. It was succeeded by Series 7™ in 1955, thereby enabling both Jacobsen and Fritz Hansen to write their names into furniture history.

Arne Jacobsen was incredibly productive, both as an architect and a designer. At the end of the 1950s he designed the SAS Royal Hotel in Copenhagen, also designing the Egg™, the Swan™, the Swan Sofa™ and Series 3300™ for the same project.

## UPHOLSTERY

The Egg™ comes upholstered in both fabric and leather. The upholstery is available in the following selection of fabrics and leathers:

### Fritz Hansen Colours:

The Fritz Hansen Colours are created exclusively by Republic of Fritz Hansen's own design team and consist of serene pale pink, warm and earthy terracotta orange and finally deep ocean blue.



**BLUE**  
FABRIC: FH 6001

**ORANGE**  
FABRIC: FH 5901

**PINK**  
FABRIC: FH 5801

### Fabrics:

Canvas, Capture, Comfort, Diablo, Divina, Divina Melange, Divina MD, Fame, Fiord, Hallingdal, Steelcut, Steelcut Trio, Sunniva and Tonus.

### Leathers:

Basic, Classic, Rustic, Natural, White, Optical white, Elegance and Sense.



## WARRANTY

A five-year warranty against manufacturing defects in standard products (materials and workmanship). Wear, tear and damage to the product are not covered under this warranty. Claims from end users under the guarantee must be submitted to the vendor from whom the product was purchased. All measurements are indicative.

### STANDARD WARRANTY:

5 years

### MY REPUBLIC EXTENDED WARRANTY:

5 years: Fabric, Tilt, Swivel, Automatic return, Leather: Basic.  
10 years: Base, Shell, Leather: Classic, Rustic, Natural, White, Optical white, Elegance, Sense.

To obtain an extended warranty offered through My Republic the products should be registered online. Go to [www.fritzhenzen.com/myrepublic](http://www.fritzhenzen.com/myrepublic) to register.

BASIC LEATHER



BLACK

CLASSIC LEATHER



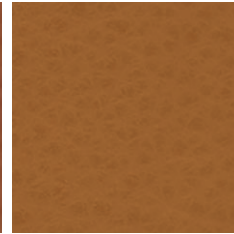
BLACK



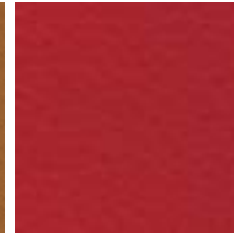
BLACK BROWN



COGNAC



WALNUT



BRIGHT RED

SOFT LEATHER



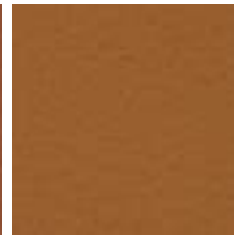
BLACK



BLACK BROWN



COGNAC



WALNUT

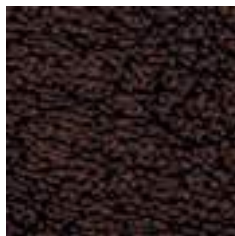


BRIGHT RED

ELEGANCE LEATHER



BLACK



BLACK BROWN

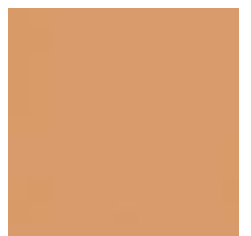


WALNUT



INDIAN RED

RUSTIC LEATHER



RUSTIC

SENSE LEATHER



CONCRETE GREY



CHOCOLATE

NATURAL LEATHER



NATURAL

WHITE LEATHER



WHITE

OPTICAL WHITE LEATHER



OPTICAL WHITE

IT IS POSSIBLE TO ADJUST THE SITTING POSITION BY USING THE TILT FUNCTION.

THE HANDLE FOR CONTROLLING THE SITTING POSITION IS FITTED AT THE FACTORY.

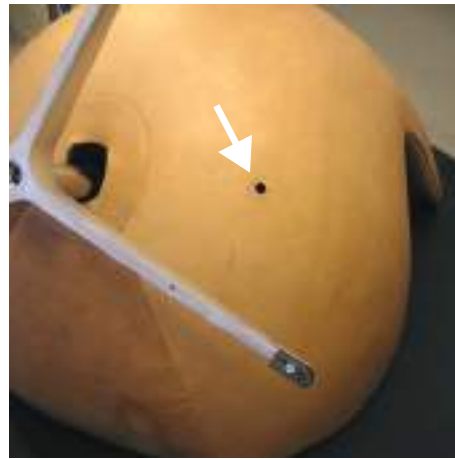
TO ADJUST YOUR SITTING POSITION, SIMPLY TURN THE HANDLE CLOCKWISE OR ANTICLOCKWISE. PLEASE BE AWARE THAT THE HANDLE DOES NOT HAVE A LOCK FUNCTION.

PLEASE NOTE: WHEN THE HANDLE FEELS PARTICULARLY LOOSE STOP ROTATING TO AVOID THE HANDLE BECOMING DETACHED.

IF THE HANDLE BECOMES DETACHED PLEASE FOLLOW THE INSTRUCTIONS BELOW TO REATTACH.

PLEASE NOTE: THE DIRECTION OF THE HANDLE HAS TO HAVE A VERTICAL ANGLE IN ORDER TO FIT INTO THE SCREW THREAD WHICH IS HIDDEN INSIDE THE EGG™.

TURNING THE HANDLE CLOCKWISE WILL GIVE A MORE UPRIGHT & FIRM SITTING POSITION.



THIS IS WHAT HAPPENS INSIDE THE EGG™.

◀ LOOSE TILT MECHANISM SHOWN TO THE LEFT

HARD TILT MECHANISM TO THE RIGHT ▶

