

Isola

Designer: Claesson Koivisto Rune
Year: 2012

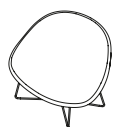
In waiting spaces, people naturally tend to assume a relaxed posture, particularly while using their computer, laptop or smartphone for work or to pass the time. This consideration was the starting point for the conception of Isola, an armchair with a contemporary design that responds to the need for comfort in public or semi-public places. Isola features a visually inviting shape, and a broad, deep seat. The possibility of combining the seat with an oval table, built into the left or right side, makes it even more practical, and ideal for use in all contract situations.

Developed by Tacchini in Italy

Dimensions (cm)

Cod. OIS118T

Cod. OIS118



W 118 D 86,5 cm
H 85 H seat 40cm
/H table 57,5 cm

W 118 D 86,5 cm
H 85 H seat 40 cm

Non-removable
covers

CAD Files:
3D (.dwg, .3ds)
2D (.dwg)

Download CAD
files at tacchini.it/en/downloads

Materials description

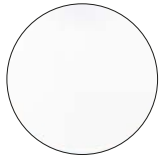
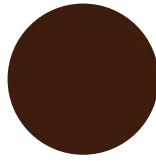
Internal frame: cold foam with metal inserts.

Base: tubular metal base Ø 18 mm. Powder-coated painted or chromed.

Upholstery: non removable cover.

Side table: little side table 385,7 × 347,3 mm, thickness 20 mm in the middle, 25° inclination.

Painted base

T02 RAL 9016
WhiteT03 RAL 7022
GreyT07 RAL 9011
BlackT08 RAL 8019
Brown

Chromed base

T24
Satin Chromed

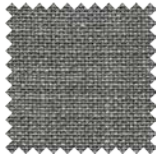
Side table

T33
Matt Black TravertineT34
Shiny Biancone

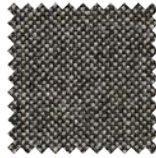
Suggested upholsteries



Silene



Thesium



Trifolium



Aniline Leather



Divina



Super Leather

Materials informations



Metal components	45%
Cold foam	37%
Upholstery	18%

Polyurethane

Flexible expanded polyurethane is a solid elastic polymeric material with open cell structure. It is a non-toxic material and above all free from ozone-damaging components. Production and processing of the polyurethane we use meet the objectives of the new policy of ensuring the protection of human health and of the environment. We focus in particular on the choice and use of the types of density of polyurethane suitable for preserving over the years the features of load capacity, elasticity and resilience. For products used in public spaces flame-retardant expanded polyurethane is chosen, tested and certified according to international regulations.

Metal

The need to combine complex yet lightweight shapes with resistant materials necessarily involves the use of metals such as steel and aluminium. Products in polyurethane foam are made with an inner steel frame for adding strength to the structure. The bases are in tubular metal which can be chromed with a gloss or satin finish or painted with epoxy powders.

Foam

Similar to polyurethane, foam is used for moulding products with special and organic shapes. It is a material which is highly resistant to ageing and flames. Its appearance at the edges is clean, compact. All products made with a foam structure offer a solution with extraordinary comfort.

Recyclability

All Isola elements are 100% recyclable when fully separated. Tacchini undertakes on-going research and development, with efforts made to introduce products which are a perfect combination of function and safety without jeopardizing the final design of the same articles. During production attempts are made to minimize noise and emission levels and to reduce rejects as far as possible. All the single materials which make up the production process, once disassembled, can be reused several times, maintaining a high quality standard.

Packaging

Isola element is dispatched already assembled. It is protected by tissue paper and cellophane to protect the covering from dust and direct contact with the cardboard. The product is packed in rigid cardboard boxes suitable for world export. Manufacture of the packaging observes the criteria for recovery both as recycling and energy recovery and composting.

Once a product reaches the end of its life cycle it has to be eliminated.

To discover more about Tacchini environmental policy please visit: www.tacchini.it



Claesson Koivisto Rune

The Claesson Koivisto Rune studio was established in 1995 as a multidisciplinary architecture and design workshop, in line with the classic Scandinavian tradition, but with the aim of exploring new concepts, and pursuing the values of simplicity and innovation. The three Swedes have created architectural designs throughout the world and in every sector, from homes to restaurants, retail to executive buildings, as well as furniture ranges for numerous major international firms.

Other products by Claesson Koivisto Rune: Campo, Doodle, Doodle Armchair, Doodle Stool, Highlife, Isola, Kelly B, Kelly C, Kelt E, Kelly H, Kelly L, Kelly O, Kelly T, Kelly V, Kelly W, Lima, Lima Armchair, Misura S, M, L, XL, Montevideo, Montevideo Armchair, Pisa, Quartier, Santiago, Santiago Armchair, Spin, Split.

Tacchini Projects:



The Fourth, Tafelrond Hotel
(Leuven, Belgium)



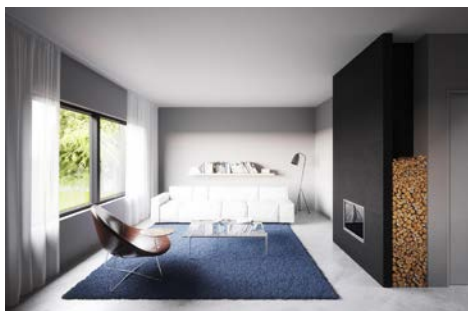
Okko Hotel Paris
(Paris, France)



Okko Hotel Grenoble
(Grenoble, France)



DoubleTree by Hilton
(Wroclaw, Poland)



Tind House
(Fiskarhedenvillan, Norway)



Limegrove Spa & Fitness
(Limassol, Cyprus)