



---

**Sesann**

Designer: Gianfranco Frattini  
Year: (1970) 2015

A reissue of a historic design by Gianfranco Frattini, Sesann is a collection of sofas and armchairs with soft, cosy forms that evoke feelings of warmth and sensuality, thanks to the tubular metal frame, which acts as an architectural structure, enveloping, containing and accentuating the cushioning. Sesann commands its space with its bold volumes and elegant, sophisticated design. With a choice of leather or fabric coverings to create striking combinations of colours and textures between the cushions, frame and ash wood feet.

Developed by Tacchini in Italy



**Cod. OSESP76**  
**W 75 D 70 H 42 cm**

---

**Materials description**

Internal frame: cold foam with backrest insert and seat in polyurethane foam.  
Seat in 18 mm thick poplar plywood and solid fir wood with elastic belts.

---

Base: painted or chromed metal.

---

Feet: walnut or gray stained ash.

---

Upholstery: not removable.

Chromed structure



T23  
Polished Chromed



T24  
Satin Chrome



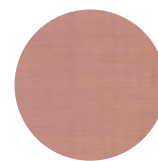
T25  
Matt Champagne Gold



T27  
Matt Black Chromed



T28  
Polished Black Chromed



T64  
Brush Matt Copper

Painted structure



T01 RAL 9010  
White



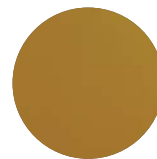
T07 RAL 9011  
Black



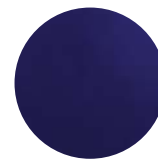
T11 RAL 2011  
Orange



T61 RAL 6014  
Green



T62 RAL 1005  
Ochre

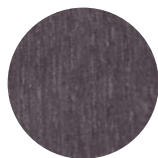


T63 RAL 5002  
Blue

Feet



T43  
Dark Walnut



T49  
Grey

Suggested upholsteries



Early



Eranthe



Lars



Aniline Leather

## CONTEXT

ENQUIRIES  
info@contextgallery.com

Tel. 404. 477. 3301  
Tel. 800. 886.0867

contextgallery.com