

## LIPP

design Piero Lissoni

Sofa with backrest frame in double-paneled fir-wood and armrests frame in multilayer poplar wood. Seat chassis in 50x30mm tubular steel with epoxy powder coating, sprung with coated rubber elastic straps. Seat padding in polyurethane foam coated with a covering in 100% polyether thermally bonded onto a polyamide velveteen backing. Structure padded in differentiated density polyurethane foam with covering in needle punched, resinated, nonwoven polyester fibre, bonded onto a polyamide velveteen backing. Lumbar support inserted in the backrest with multilayer frame padded in differentiated density polyurethane foam. "Capitonné" with non-removable leather or fabric upholstery. Seat cushions in prewashed and sterilized goose down, stitched into separate compartments, with differentiated density polyurethane foam insert. Additional loose quilted cushions, available in two sizes (50x50cm or 60x60cm), with quilted fabric or leather upholstery, both fully removable by zippers.

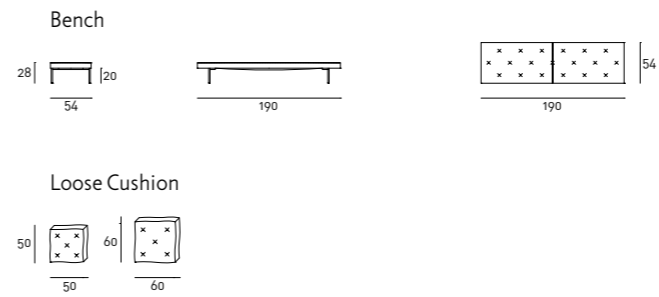
Tubular steel feet, joined by a bracket in square section 15x15mm, with burnished colour epoxy powder coating, and adjustable black PVC tips.

Fabric or leather upholstery, both fully removable by zippers and Velcro fastenings.

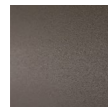
All perimeter stitching are enhanced with edgings in "grosgrain" for the fabric version, and braided leather trim, in the same finish, for the leather version.

Seat depth: 68cm.

Bench with supporting frame in 40x30mm tubular steel with epoxy powder coating and under seat sprung with coated rubber elastic straps. Tubular steel feet, joined by a bracket, in square section 15x15mm, with burnished colour epoxy powder coating, and adjustable black PVC tips. Padding in differentiated density polyurethane foam, covered with a quilted mat in prewashed and sterilized goose down, stitched into separate compartments. Fabric or leather quilted upholstery, both fully removable by Velcro fastenings.



### Bracket



Burnished  
Painted Steel