

NOTES (INDOOR + OUTDOOR) + LAZY SUSAN

design Massimo Mariani

Notes

Table available for indoor and outdoor, with granite, smoked grey glass or transparent glass top (indoor/outdoor use), wood and marble top (indoor use only).

Indoor/outdoor version: Ø30 mm tubular steel frame with junction steel bar, section 80x15 mm, coated with polyester epoxy powder gunmetal colour with black PVC tips.

Top in black absolute Zimbabwe granite, or marble White Carrara, Black Marquinia, Sahara Noir or Red Levanto, with an undertop in blackpainted Dolulflex, coupled with a non-slip tape to make it adhere with the top; small plates with a conical counterbore are fitted to the under-top, for the alignment and fixing to the base. The marble version provides a satin finish and an opaque transparent protective varnish or a matt or glossy polyester finish.

Top in wood, with water-based acrylic paint finish, made in "sandwich" of MDF and aluminum sheet pressed and glued together, veneered with plates of chestnut, natural or charcoal dyed, Stone Oak® or multilaminar wood Striped Grey; beveled edge and bottom always matt satin lacquered in the finish of the top. Top in 12 mm tempered clear glass or smoked glass, to which are fixed, with a UVcured adhesive, small plates with a conical counter bore to align it with the structure.

All top versions are secured to the frame by means of tie rods.

Lazy Susan

Circular central plate, available in marble or wood, dimensions Ø70, Ø90 and Ø110 h.4 cm, made of a supporting base in black HPL, thickness 10 mm, and a swiveling mechanism "sandwiched" between the top and the support. Table top support secured by black PVC tips.

Top in marble : top with thickness 20 mm with bevelled edge, available in black Marquinia, white Carrara, red Levanto or Sahara Noir with glossy polyester finishing.

Top in wood: top in made of MDF (thickness 20 mm) with beveled edge, and upper part and edge veneered with 10/10 plates in natural chestnut, charcoal dyed chestnut or Stone Oak® with acrylic painting finish; beveled edge and lower part always lacquered in the same finishing of the top.

Structure



Steel with Gunmetal Grey Coating (In-Outdoor)

Top



Black Absolute Zimbabwe Granite (In-Outdoor)



White Carrara Marble (Indoor)



Black Marquinia Marble (Indoor)



Red Levanto Marble (Indoor)



Sahara Noir Marble (Indoor)



Natural Chestnut (Indoor)



Charcoal-dyed Chestnut (Indoor)



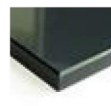
Stone Oak® (Indoor)



Striped Grey (Indoor)



Transparent Glass (In-Outdoor)



Smoked Grey Glass (In-Outdoor)

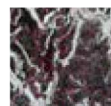
Lazy Susan (only Indoor)



White Carrara Marble



Black Marquinia Marble



Red Levanto Marble



Sahara Noir Marble



Natural Chestnut



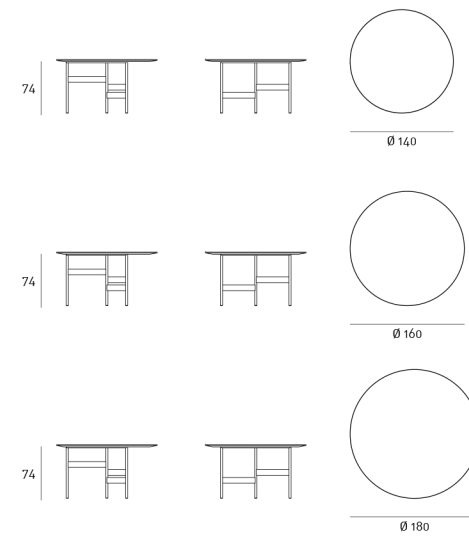
Charcoal-dyed Chestnut



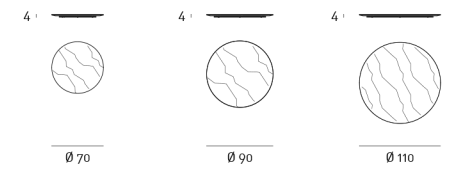
Stone Oak®

Technical Drawings

Table



Lazy Susan - Marble



Lazy Susan - Wood

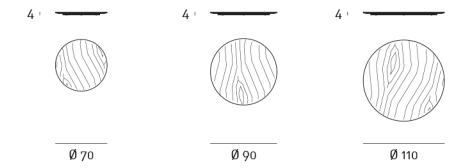
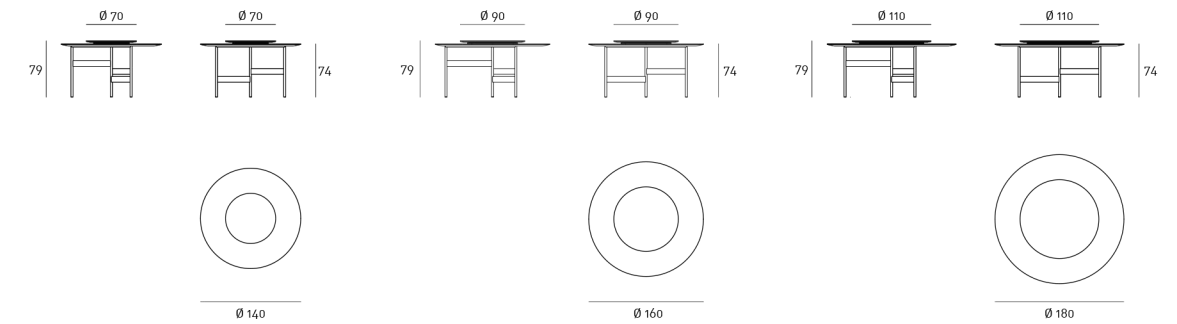


Table + Lazy Susan



Notes

Granite: of uniform colour, granite is a hard stone of volcanic origin and is an "intrusive rocks", which emerge from solidified magma inside the earth's crust; for its particular nature, granite is a very resistant material to abrasion and compression and easy to be maintained.

Stone Oak®: this wood owes its particular coloring to an entirely natural process. Because of this, some slabs may look more brown than others. Our commitment is to provide you a high quality product: any differences in color should not be considered as defects.

Striped Grey: it is a decorative multilaminar wood veneer, always finished with a transparent acrylic painting, which features exclusive patterns reproducing the natural characteristics of wood. We would like to remind you that, being a natural and living wooden material, it may present non-homogeneous colour shades, which are peculiarities of the material itself.

On request, an additional protective (acrylic solvent) painting is available for the Stone Oak® finishing only. It should be noted that this additional coating slightly changes the natural color and texture of the surface. Although this supplementary painting increases the surface resistance, it is still a natural material; therefore small superficial stains, due to oil or other substances, have to be promptly removed, before being absorbed in depth by the wood. Thus, we recommend regular care and maintenance.

For the marble top version please specify the required finish in the order.

Although the Lazy Susan can endure high temperatures, it is advisable to avoid placing (directly on the top) tools just removed from heat sources. The direct contact with overheated objects could cause indelible stains or crevices, created by the thermal shock. Therefore, it is advisable to always use a trivet to place the dishes on the surface.